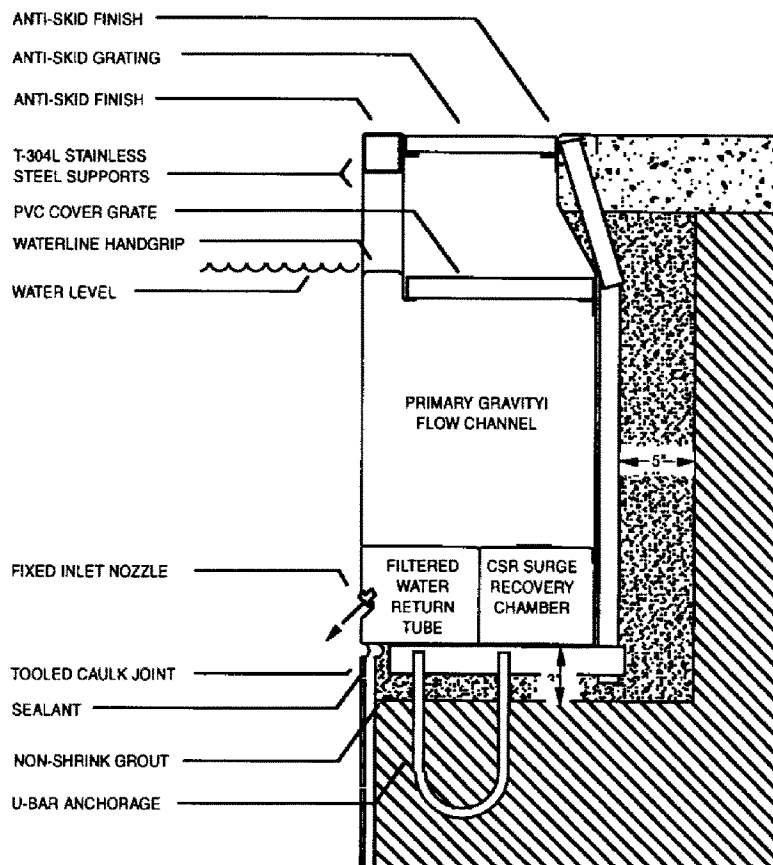


SERIES SRRS



WITH STAINLESS STEEL FACE

Designed to produce fast, high competition pools with typically higher flowrates. Each model incorporates the intent of the NCAA Rule, "Overflow System" including, "guarantee that the level of the water in the pool is not lower than the overflow rim of the pool at all times". Gravity-flow Primary Channel is sized to accept static surge. Constant Surge Recovery (CSR) channel functions as a Secondary gravity-flow static surge channel. When dynamic surge is sensed by the controller, the CSR pump initiates, converting the Secondary Channel to a Perimeter Suction Conduit. See Model SSRS-CRS-CE below for detailed description.



Features

- Constant Surge Recovery System (CSR)
- Competitive Endwall Model (Meets FINA Touchpad Dim.)
- Fixed downward inlets, 17" below surface water level
- Installed overflow rim tolerance of plus or minus 1/16"
- All T-304L Stainless Steel, 2B finish
- 12 ga. T304L stainless steel pressure tube
- Grating selection includes PVC "I" Beam/Panel or Fiberglass
- Water Makeup and Level Control System (Auto)

Options

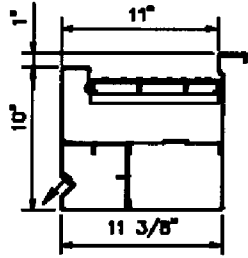
Ceramic Tile Gutter Face Endwall Model with Vertical Freeboard Grill or Screen (FINA)



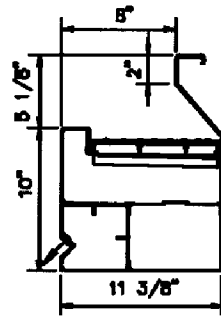
Aquatic Development Group
One Aquatic Center
P.O. Box 648
Cohoes, NY 12047
518.783.0038

Whitten Stainless Steel *SRRS-Surge Recovery Recirculation System*

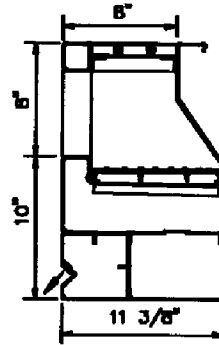
SELECTION DETAILS



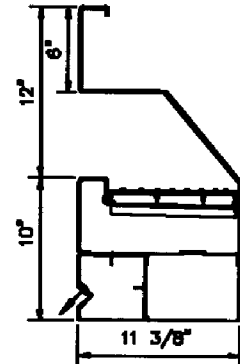
SRRS-DL
Deck Level Gutter



SRRS-SR
Semi-Recessed Gutter



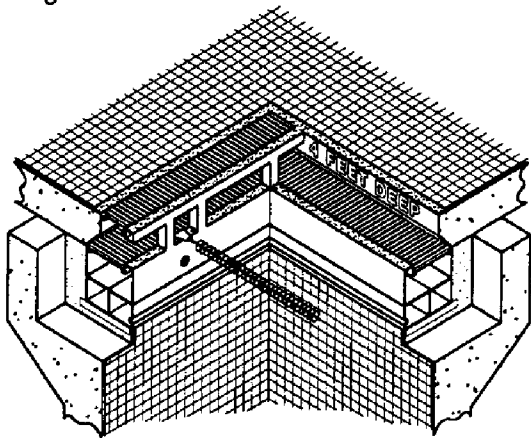
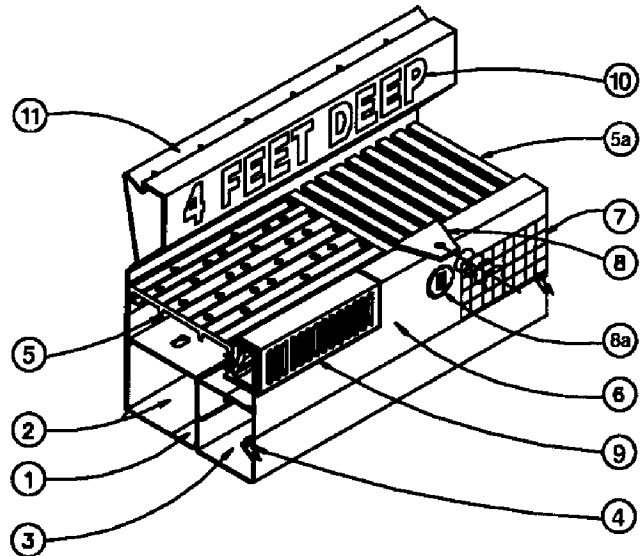
SRRS-CE
Competition-End Gutter



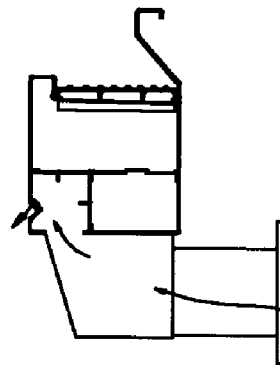
SRRS-FR
Fully-Recessed Gutter

Whitten Recirculation Components

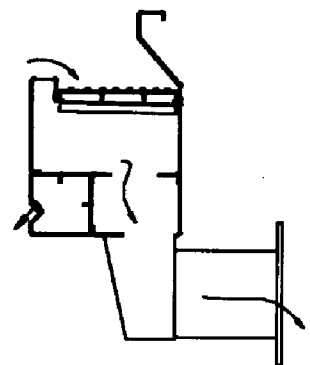
1. Primary Flow Channel
2. CSR Channel-Competition
Surge Recovery Channel
3. Filtered Water Return Channel
4. Filtered Water Inlet Nozzle
5. Non-Skid PVC Uni-grate
- 5a. Non-Skid PVC I-Beam Grate
6. Stainless Steel Face
7. Tile Inlay on Concrete Substrate
8. Lane Line Clip at Water Level
- 8a. Lane Line Clip Below Water Level
9. Integral Surge Weir
10. Pool Depth Markings
11. Intergral Deck Drain



SRRS Corner Detail of Semi-Recessed to Competition-End



SRRS Return Converter

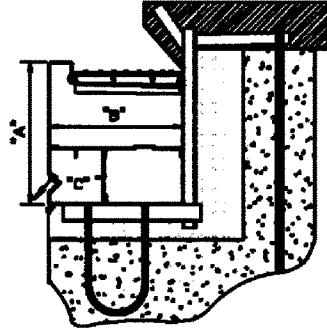


SRRS Overflow Converter

Aquatic Development Group
One Aquatic Center
P.O. Box 648
Cohoes, NY 12047
518.783.0038

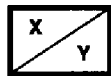
WHITTEN

Whitten Stainless Steel SRRS-Surge Recovery Recirculation System SIZING CHART



Whitten Preferred Sizing

Pool Size:	30 x 60	45 x 75	45 x 82	60 x 75	60 x 82	60 x 120	60 x 164	75 x 164		
Pool Perimeter:	180	240	254	270	284	360	448	478		
Pool Area:	1800	3375	3690	4500	4920	7200	9840	12300		
GUTTER DIMENSIONS	FLOW RATE (GPM)									
A	B	C	X Y	X Y	X Y	X Y	X Y	X Y		
19 1/8"	10"	5" x 6"	1090 2350	1045 2295	1035 2280	1025 2265	1015 2250	965 2185	920 2115	905 2085
19 1/8"	12"	5" x 6"	1750 3695	1695 3640	1680 3615	1665 3585	1650 3570	1585 3500	1530 3500	1500 3390
19 1/8"	14"	5" x 6"	2415 5055	2345 4975	2330 4945	2310 4930	2300 4920	2225 4835	2225 4835	2125 4695

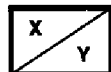


X=Gutter Flow with 1 Converter
Y=Gutter Flow with 2 Converters

For Comparison
of calculations
(see **Technical
Bulletin #110** in
the ADG Equipment
Systems Catalogue)

Industry Minimum Sizing

Pool Size:	30 x 60	45 x 75	45 x 82	60 x 75	60 x 82	60 x 120	60 x 164	75 x 164		
Pool Perimeter:	180	240	254	270	284	360	448	478		
Pool Area:	1800	3375	3690	4500	4920	7200	9840	12300		
GUTTER DIMENSIONS	FLOW RATE (GPM)									
A	B	C	X Y	X Y	X Y	X Y	X Y	X Y		
19 1/8"	10"	5" x 6"	4865 9730	4215 8430	4095 8190	3970 7940	3875 7750	3440 6880	3085 6170	2985 5970
19 1/8"	12"	5" x 6"	6580 13160	5700 11400	5540 11080	5375 10750	5240 10480	4655 9310	4170 8340	4040 8080
19 1/8"	14"	5" x 6"	8410 16820	7285 14570	7080 14160	6870 13740	6700 13400	5950 11900	5335 10670	5165 10330



X=Gutter Flow with 1 Converter
Y=Gutter Flow with 2 Converters

WHITTEN

Aquatic Development Group
One Aquatic Center
P.O. Box 648
Cohoes, NY 12047
518.783.0038